


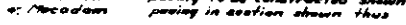


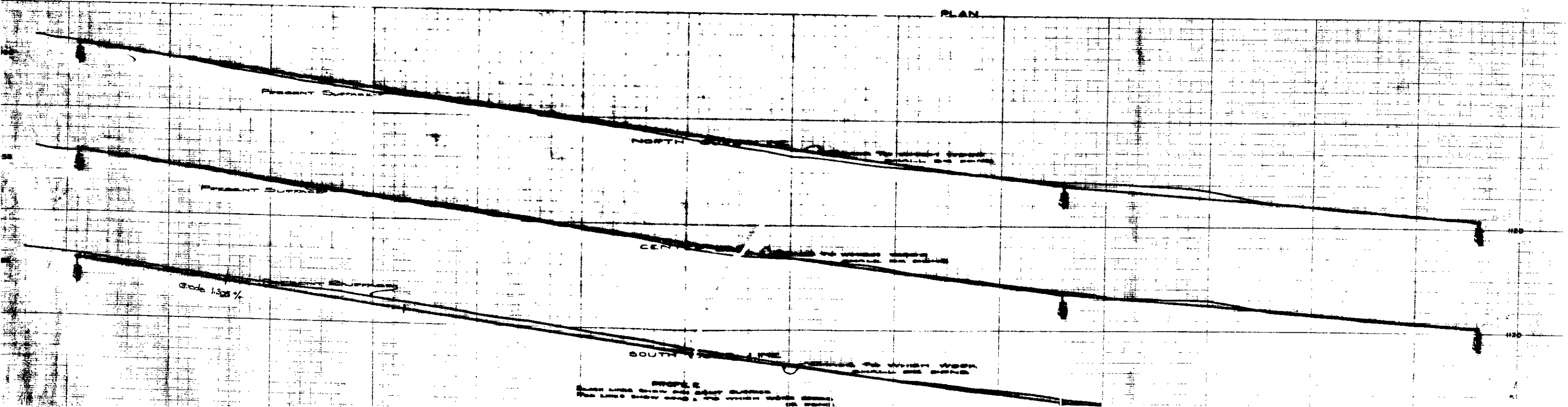
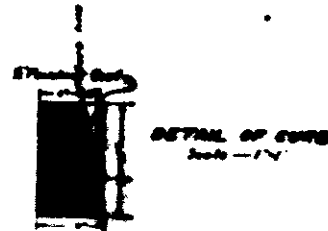
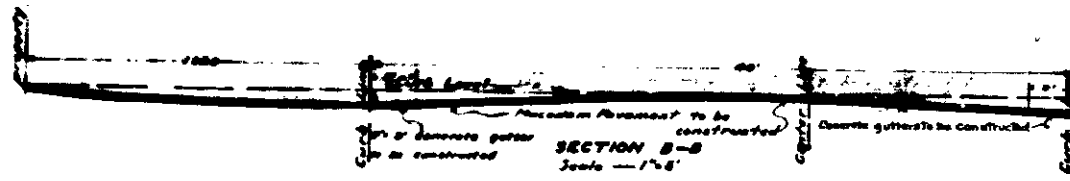
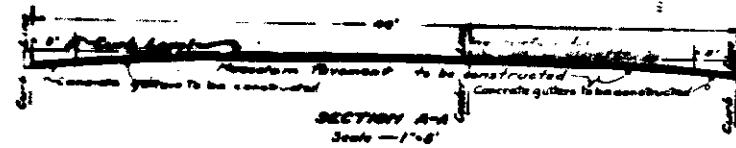
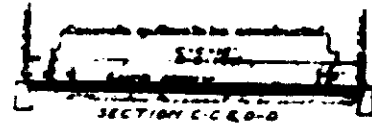
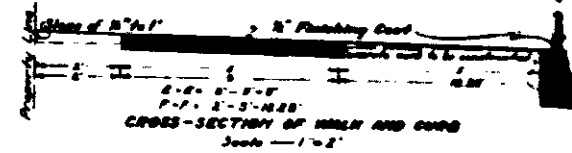
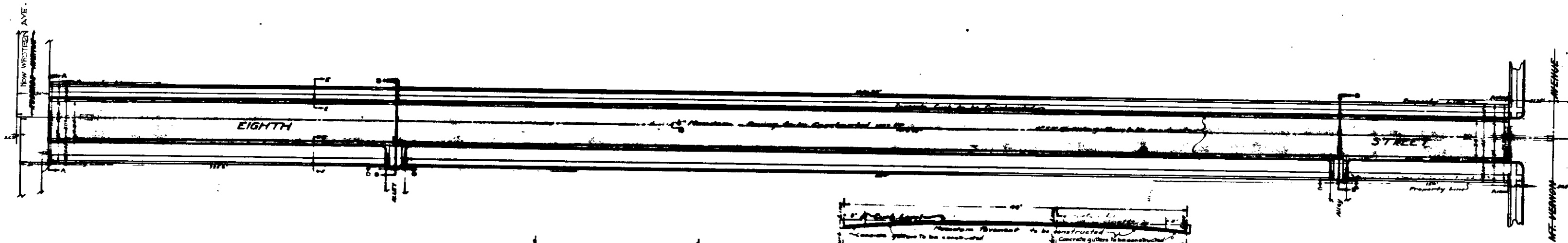








**LEGEND**  
 " or in. means inch or inches  
 ' or ft. means foot or feet  
 N° means number  
 Elev. means elevation  
 Concrete gutter to be constructed shown thus   
 Concrete curb to be constructed shown thus   
 Concrete used in section shown thus   
 to be constructed shown thus   
 to be constructed shown thus   
 paving in section shown thus 

**PLAN**

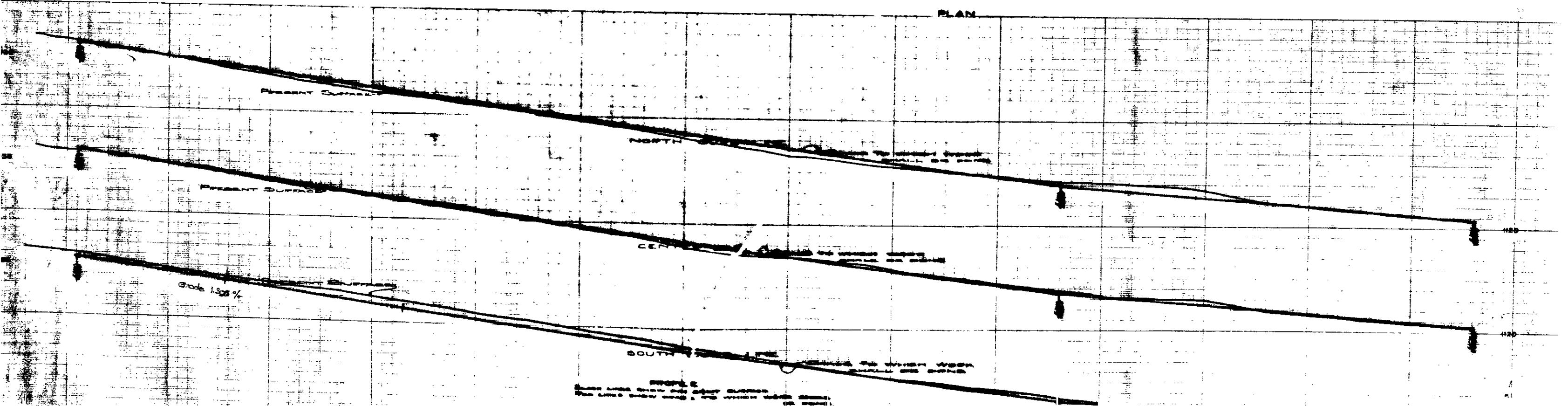


**NOTES**  
 SHOW LINE CURB AND GUTTER ELEVATIONS  
 THE LINE SHOW CURB & GUTTER ELEVATIONS  
 (SEE SCALE)



**LEGEND**  
 " or in. means inch or inches  
 ' or ft. means foot or feet  
 N.P. means number  
 Elev. means elevation  
 Concrete gutter to be constructed shown thus   
 Concrete curb to be constructed shown thus   
 Concrete curb in section shown thus   
 Concrete gutter in section shown thus   
 Macadam paving to be constructed shown thus   
 Macadam paving in section shown thus 

**PLAN**



**NOTES**  
 1. ALL CURB AND GUTTER SHALL BE CONSTRUCTED WITH CONCRETE.  
 2. THE CURB SHALL BE 12\"/>